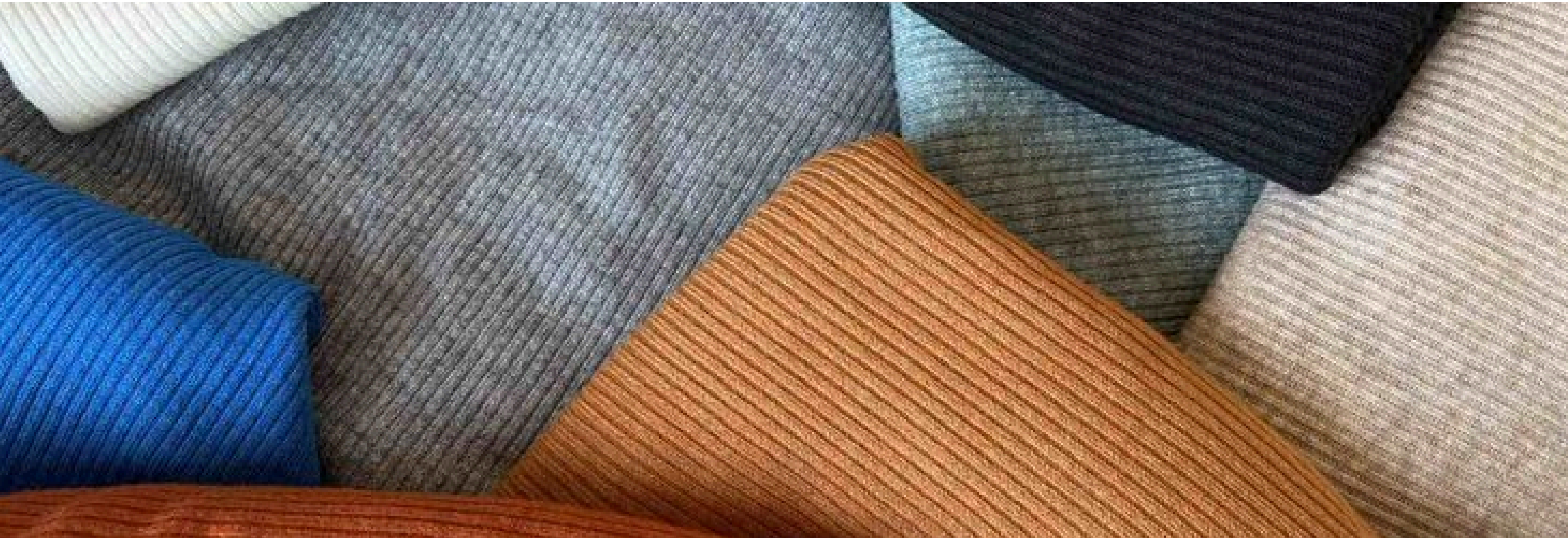


AVANT

KNITTED CATALOGUE

www.avantincorp.com



ABOUT AVANT



QUALITY IS OUR PRIORITY

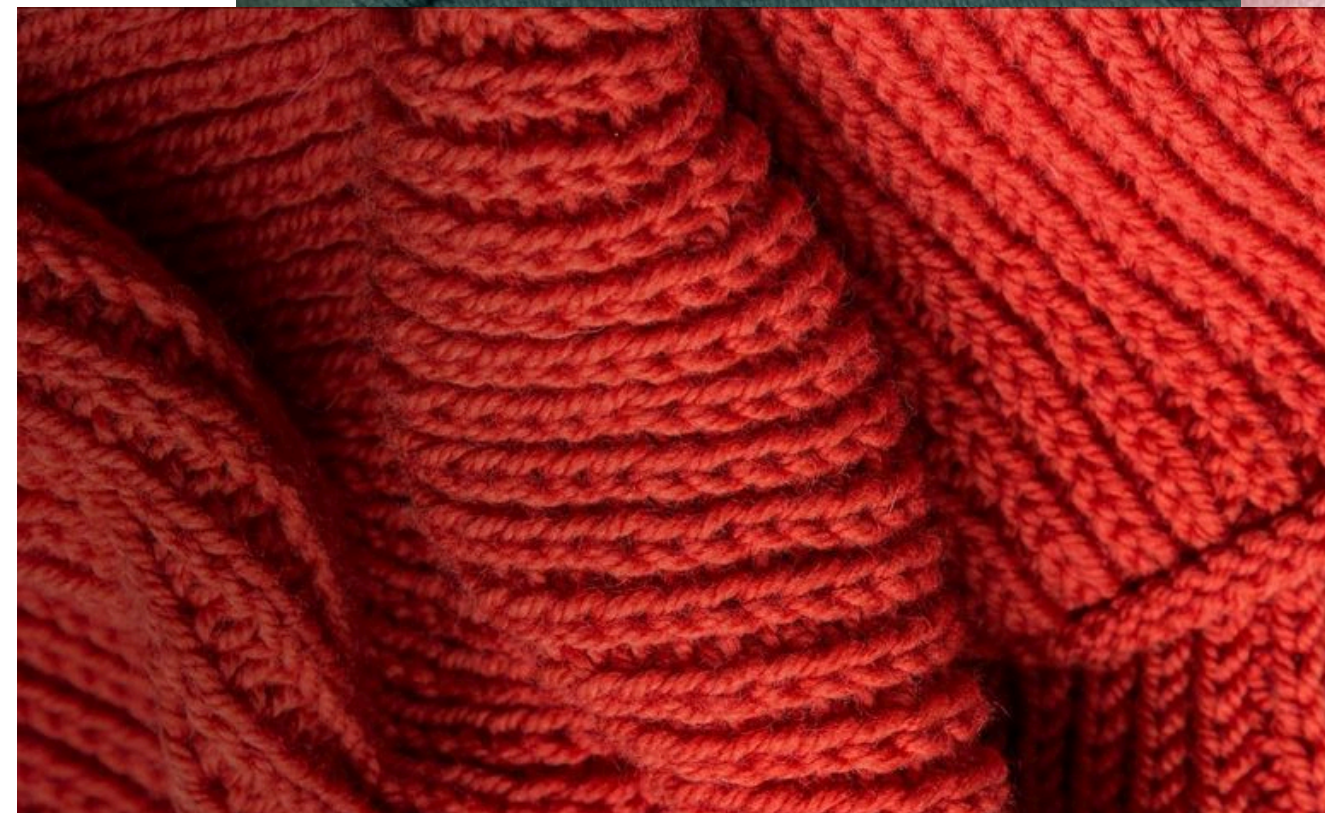
Avant is a top worldwide supplier of solutions for the textile supply chain, generating value that is sustainable all the way through the chain. We provide you with a variety of goods and services covering every facet of the textile industry, drawing on our many years of expertise in the field. Our goods are guaranteed to meet your exact requirements because of our extensive product knowledge, sourcing skills, and variety of service delivery approaches.

www.avantincorp.com

OUR PRODUCT

Knitted fabric is a textile that results from knitting, the process of inter-looping of yarns or inter-meshing of loops. Its properties are distinct from woven fabric in that it is more flexible and can be more readily constructed into smaller pieces, making it ideal for socks and hats.

www.avantincorp.com



COTTON RIBBED KNIT

Because the fabric has lines running up and down it, called "ribs," cotton ribbed knit is simple to recognise. Because it's so flexible, it's mostly used for necklines and cuffs, but it also works great for kid's t-shirts. Flat and circular weft knits can be used to knit ribs.



COTTON JERSEY

The most popular kind of knit is probably cotton jersey; it's incredibly soft and flowy and works well for many different types of clothing, though leggings and t-shirts look great in it. The weight of the jersey is the most crucial factor to consider. The GSM range that we provide is 3.0 to 10 ounces.



Cotton lycra and cotton spandex knit

These materials are incredibly elegant and silky for female clothing. This kind of fabric is used to make a lot of the layering tees and tanks you see in stores. These textiles have exceptional stretch and strong recovery (i.e., they maintain their form well and won't stretch out) due to the little amount of spandex or lycra. Many knit mixes made of spandex or lycra weigh somewhat more than jersey.



Cotton interlock knit

Another popular knit type that you can get at your neighbourhood fabric store is cotton interlock knit, which comes in a range of solid colours and occasionally some designs. Because interlock is typically a little thicker and more sturdy than other knits, it sews up a lot like a woven, making it a wonderful knit for beginners. For dresses or skirts, interlock is utilised.



Cotton French terry knit

One that is frequently utilised in daily life for a variety of functions is the French terry knit. It has a relaxed, comfortable vibe and is incredibly soft and drapey. Stretch or jersey terry, another name for french terry, features little, extremely soft loops on the underside that don't irritate skin at all. The patterned side of the fabric is flat. is occasionally used to create t-shirts, but it would also look great on lounge trousers or shorts.



Sweatshirt fleece

The interior is made of incredibly soft fleece, while the exterior is smooth. It's lighter weight than the sweatshirts you see in stores, just like the Hacci jumper knits. It implies that it will drape nicely rather than being merely large. It will be fairly simple to stitch because there isn't much flexibility to it. It would also look great with shorts, lounge pants or a lightweight hoodie.



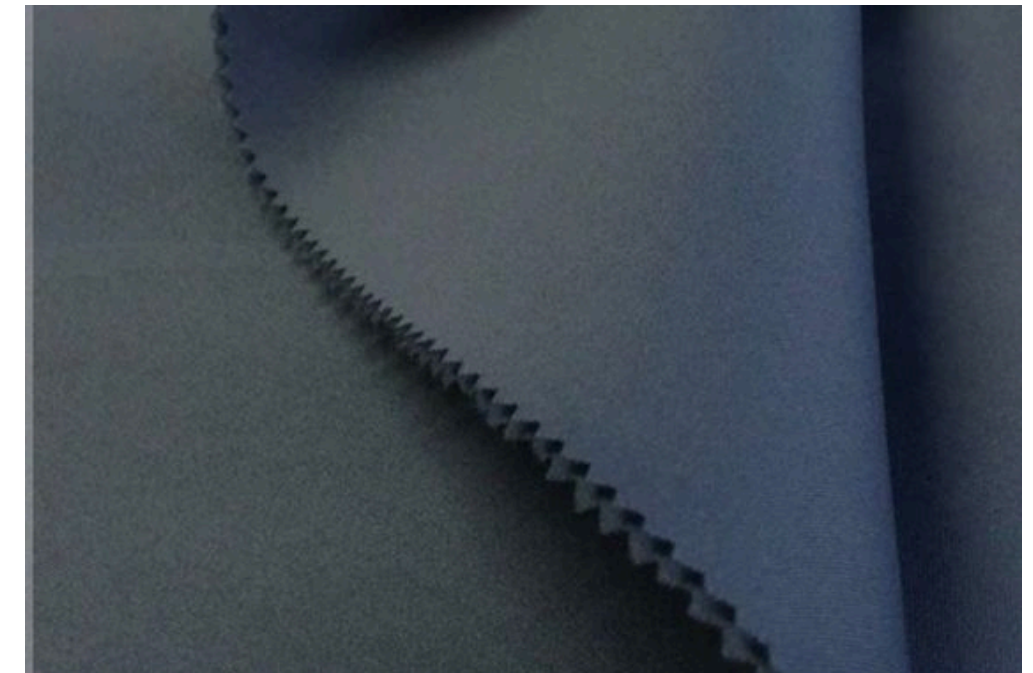
Rayon spandex Single Jersey

Since rayon spandex blends are lighter than most cotton spandex blends, they are used for nightgowns, children's t-shirts, and other items; nevertheless, they should not be used for t-shirts unless you intend to layer something underneath them. However, the fabric is soft enough to collect nicely without pouffing out too much, and they would probably be quite cool in warmer weather. That said, they would work great for a gathered skirt or dress.



SCUBA

Swimwear or dancing wear knit are common names for lycra spandex knit. Because of its extreme stretchability and generally decent weight, it's ideal for creating leotards, leggings, and swimsuits (with a liner). It seems silky, almost glossy, similar to what you typically see on bathing suits.



Poly Rayon spandex

A knit that is slightly thicker and more durable than ponte de roma, it typically has a modest side-to-side texture. The amount of stretch in pontes varies greatly, and inexpensive ponte de roma can feel a lot like polyester from the 1950s. Pontes is a touch too heavy for t-shirts, but it's great for dresses and skirts. Compared to a jersey, it doesn't breathe quite as effectively.



Cotton thermal knit

Cotton thermal knit is precisely the material that is used to make long pants or thermals. Kids' long sleeve shirts made of it are fantastic.



Semi & Full Jacquards Knits – In different blends & Designs

Knits with jacquards are precisely what they sound like: textiles with various patterns. These textiles are composed of various natural or synthetic fibres, or combinations thereof. These materials are typically used to create clothing.



Feeder Stripes & Auto Stripes Fabrics

Our wide selection of striped textiles, which includes upholstery and curtain fabrics, guarantees that you'll discover a striped fabric you adore. Our striped linings, which are unique to Just Fabrics, give your curtains and blinds a stylish touch.



Pique & Honey Combo Knits

Raised fibres in Pique Knit fabric provide a ribbed pattern that may take on different diamond-like forms. This usually gives the fabric more body, which is ideal for knit dresses, polo shirts, skirts, and other structured knit clothing. One of the top companies offering premium Cotton and PC products is us. Arouse fabrics that are produced utilising premium



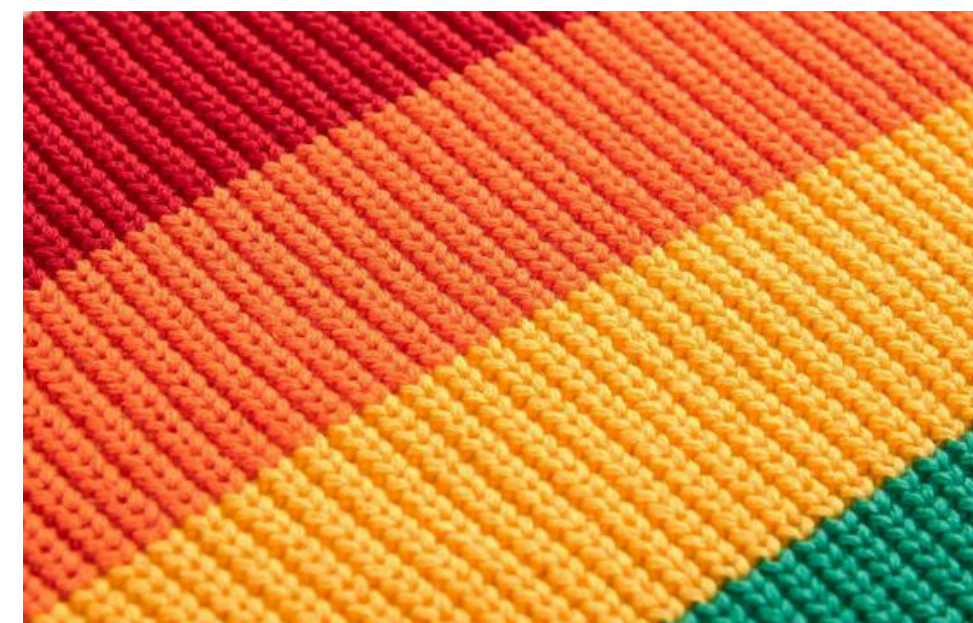
Normal & Injected Slub Single Jersey Knits

Fabrics made of single jersey are produced using the weft knitting method. This is where the interlacing of slub yarn occurs. The strands are softly twisted. These materials are highly elastic and stretchable. used in the production of men's, women's, and children's leisure clothing



Neppy - Single & Multi Color Neppy SJ

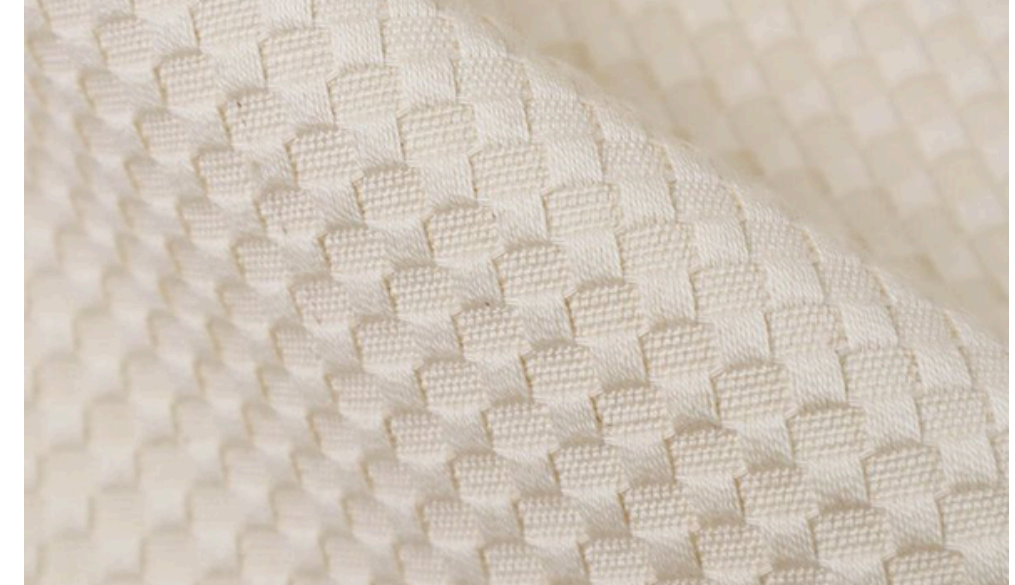
fabric that has been knitted so that a portion of the cotton fibres extend and protrude from the main surface. These materials typically have a "snowy" appearance, giving the impression that freshly fallen snow is resting on their surface. These materials are used to create T-shirts for children, adults, and women.



**Pique & Honey
Combo Knits
Fabrics –In
Cotton or Poly
Blends**

Raised fibres in Pique Knit fabric provide a ribbed pattern that may take on different diamond-like forms. This usually gives the fabric more body, which is ideal for knit dresses, polo shirts, skirts, and other structured knit clothing.

One of the top companies offering premium Cotton and PC products is us. Arouse fabrics that are produced utilising premium



**Normal &
Injected Slub
Single Jersey
Knits**

Fabrics made of single jersey are produced using the weft knitting method. This is where the interlacing of slub yarn occurs. The strands are softly twisted. These materials are highly elastic and stretchable. used in the production of men's, women's, and children's leisure clothing



**Neppy - Single
& Multi Color
Neppy SJ**

fabric that has been knitted so that a portion of the cotton fibres extend and protrude from the main surface. These materials typically have a "snowy" appearance, giving the impression that freshly fallen snow is resting on their surface. These materials are used to create T-shirts for children, adults, and women.



Grindle Jersey

The fabric is medium to high GSM, generally composed of 100% cotton yarns, and is constructed from soft twisted coarse grindle yarns. Non-reversible fabric with front and back made of distinct or identical yarns utilised in the production of men's, women's, and children's leisure clothing



Waffle Knits

Reversible knit fabric with a raised geometric structure akin to honeycomb is called waffle weave. It comes in printed, yarn-dyed, or solid-colored stripe form. The fabric has a modest elastic recovery and high stretchability. used in the production of men's, women's, and children's leisure clothing.



Velour

The process of weft knitting is used to make fabric. There are piles on the fabric's surface, either cut or uncut. Velour is a knitted material that has elasticity. It blends the luxurious look and feel of velvet with the flexible qualities of knits like spandex.



Pique Nets / MeshKnits

We are deeply involved in providing this line of mesh fabric, which is highly sought after due to its vibrant design and shade of colour. We export a large selection of mesh textiles, including metallic meshes, poly/poly lurex, nylon, nylon/ lurex, poly spandex, and nylon spandex, in various mixes and weight ranges.



Tricot

Tricot fabric has a unique weave that allows it to be smooth on one side, with texture on the other side. This allows the fabric to be sturdy, yet soft. Our tricot fabrics are perfect for luxurious lingerie, apparel, and linings. We offer Tricot fabrics in deniers, fibre compositions and structures such as dazzle, superpoly etc.. with a wider range of weight that will surely meet your end need.



Raschel Knits

Raschel knits do not stretch significantly and are often bulky; consequently, they are often used as an unlined material for coats, jackets, straight skirts and dresses. These fabrics can be made out of conventional or novelty yarns which allows for interesting textures and designs to be created. The qualities of these fabrics range from "dense and compact to open and lofty" and can be either stable or stretchy, and single-faced or reversible.

