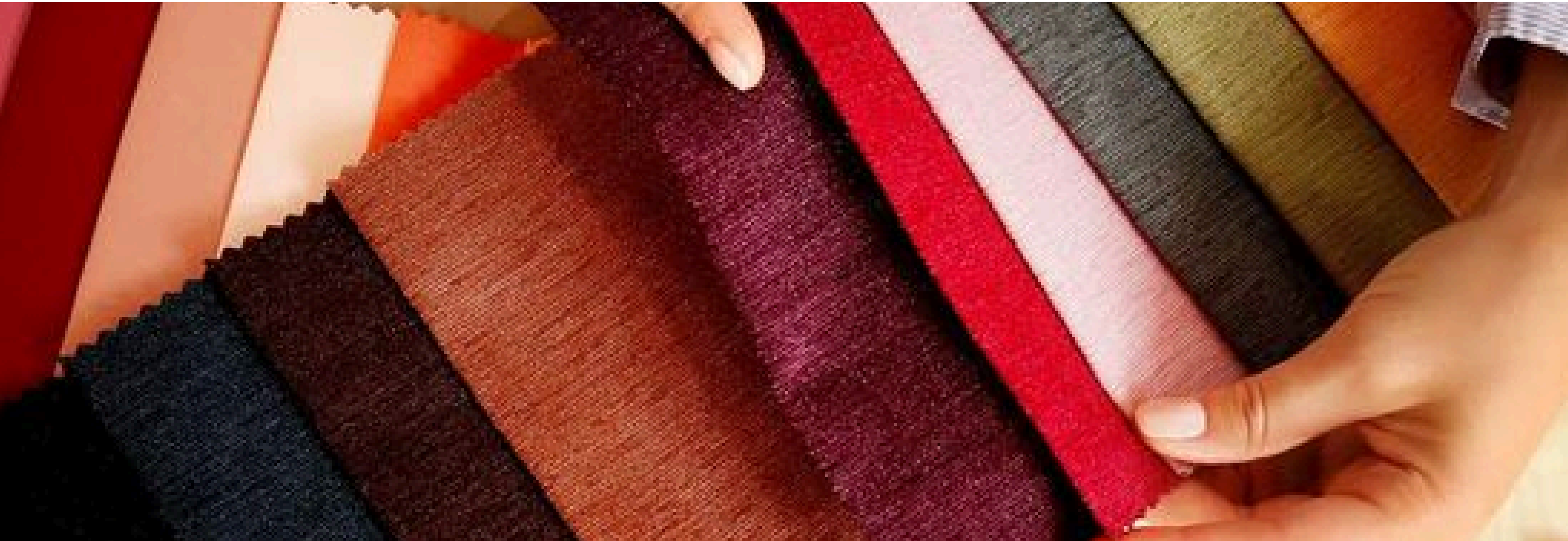


AVANT

WOVEN CATALOGUE

www.avantincorp.com



ABOUT AVANT



QUALITY IS OUR PRIORITY

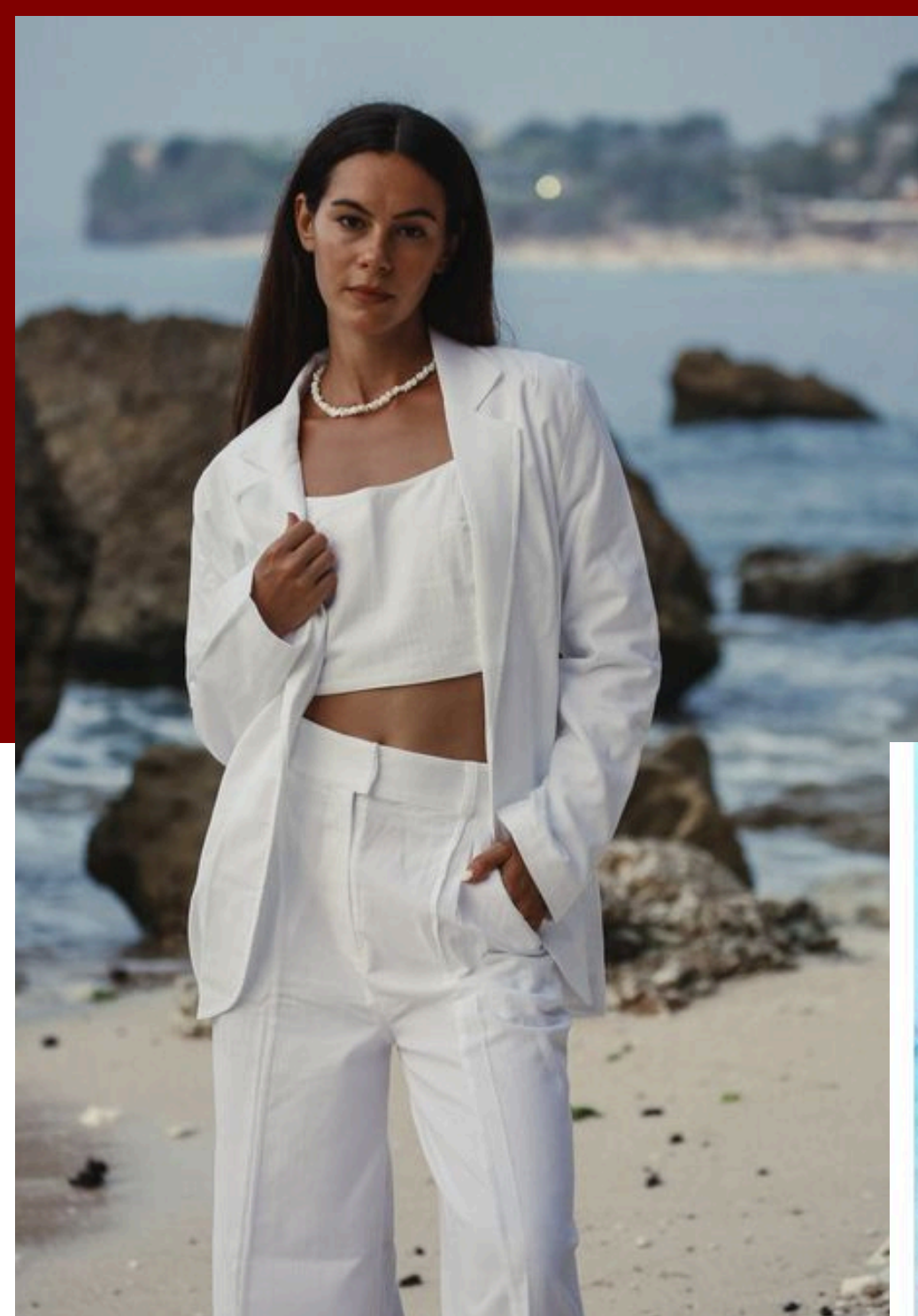
Avant is a top worldwide supplier of solutions for the textile supply chain, generating value that is sustainable all the way through the chain. We provide you with a variety of goods and services covering every facet of the textile industry, drawing on our many years of expertise in the field. Our goods are guaranteed to meet your exact requirements because of our extensive product knowledge, sourcing skills, and variety of service delivery approaches.

www.avantincorp.com

OUR PRODUCT

Woven fabrics are stronger and more structurally sound than non-woven fabrics. They are flexible but not stretchy, durable, and can be machine washed. They can be made from natural or synthetic fibers, or a blend of both, such as cotton and polyester.

www.avantincorp.com



Voile Fabric

A sheer plain-weave cloth that is sturdy but soft. usually composed of ply yarns, however combed hard twisted single yarns are sometimes utilised. It has a sticky quality. Usually made entirely of cotton, however mixes like polyester or linen are often used. It can be printed on or solidly coloured. Uses: Ladies' dresses, skirts, dress linings, and clothing accessories



Poplin Fabric

Poplin, also known as tabbinet, is a robust fabric made of any blend or kind of fibre woven in a plain weave. Because the weft is shaped like a sturdy cable, the fabric had a ridged structure similar to rep, which enhanced the smooth surface's sheen and added softness. Originally made of silk, it can today be made of wool, cotton, rayon, silk, or any combination of these materials. Uses: dresses, children's clothing, pyjamas, men's shirts, and blouses. Ideal for creating tablecloth displays or banners for retail establishments or trade exhibitions. Additionally, it's extensively utilised for dresses, blouses, uniforms, boy's suits, shirts, and sportswear of all types.



Muslin Woven Fabric

Most commonly, muslin is a white, unbleached fabric made from carded cotton yarn. Compared to long cloth up to 140, coarse weave fabric composed of carded cotton or polyester/cotton yarns with different thread counts is heavier. It weighs between light and medium. Uses: Muslin is the main fabric used by upholsterers to make chairs and sofas. The fabric is used for slipcovers, table skirts, toss pillows, bed skirts, and other items since it is lightweight.



Poplin Fabric

Georgette, often known as Georgette crêpe, is a light-weight, transparent crêpe fabric with a dull texture. It may be printed on or solidly dyed. The yarns used in the warp and weft that alternate between S- and Z-twisted patterns give it a crinkly appearance. Applications: - As lining or interlining used in the production of sarees. Used for dresses, scarves, and other clothing accessories



Gauze Fabric

It is often made of rayon, cotton, wool, silk, or other man-made fibres and is woven in a plain or leno weave. Mull is a type of bookbinding gauge that is used to bind the text block to the book cover in case binding. Applications: Bandages. Some gauze made of silk or rayon is used for trimmings and drapes. informal window treatments, such as scarves and panels. It's also used to produce outfits for women and children.



Satin Fabrics

It is a warp-dominated weaving method that creates a fabric with a minimum amount of interlacing. Originally made of silk, but today also constructed of synthetic filaments with a very glossy front and a dull back. It is currently offered in several weight ranges. Uses:-Satin is frequently used in clothing, including evening gowns, sports shorts, satin baseball jackets, women's lingerie, nightgowns, blouses, and boxers, as well as certain men's shirts, neckties, and shorts. Additionally, it's employed in the making of pointe shoes for ballet. Bed linens, upholstery, and textiles for interior furnishings are among the other applications.



Velvet Woven Fabrics

Velvet is a kind of woven tufted fabric that has a short, thick pile and uniformly spaced cut threads, giving it a unique texture. Short, compact pile of silk or synthetic fibre with a cotton or rayon backing most of the time. Like fluffy but with a shorter pile. Weft or fill yarns form velveteen pile, whereas warp or vertical yarns generate velvet pile. Uses: Covers for cushions, curtains, and evening dress.



Flannel Fabrics

A woven cloth that is napped and fuller, usually made of wool yarn. woven with a twill weave that the nap could hide. Blends can be utilised to improve the fabric's drapability and comfort. Flannel can be left unbrushed or brushed for added softness. Flannel is usually either single- or double-sided. Applications: Flannel is used for linings, covers, sleeping garments, work gloves, blazers, jackets, pants, women's and men's suits, shirts, flannel pyjamas and pants and sheets.



Drill Fabrics

Three harness warp face left hand twills are typically found in drill cloth. It is a medium- to heavy-weight, sturdy cloth. It is a tightly woven fabric with a high tensile strength since it is often constructed with carded yarns on coarser counts. Applications: Drills with smaller weights are used for dresses, skirts, pants, coats and home furnishings. Wall coverings, industrial applications, and labour clothing are all made with the heavyweight drill. Moreover, it's utilised in sportswear, ticking, banners, slip covers, book bindings, corsets, shoe linings, and ticking. Boat-sail drill is used for sailing craft sails, and khaki drill is used for clothing.



Woven Terry

Three harness warp face left hand twills are typically found in drill cloth. It is a medium-to heavy-weight, sturdy cloth. It is a tightly woven fabric with a high tensile strength since it is often constructed with carded yarns on coarser counts. Applications: Drills with smaller weights are used for dresses, skirts, pants, coats and home furnishings. Wall coverings, industrial applications, and labour clothing are all made with the heavyweight drill. Moreover, it's utilised in sportswear, ticking, banners, slip covers, book bindings, corsets, shoe linings, and ticking. Boat-sail drill is used for sailing craft sails, and khaki drill is used for clothing.



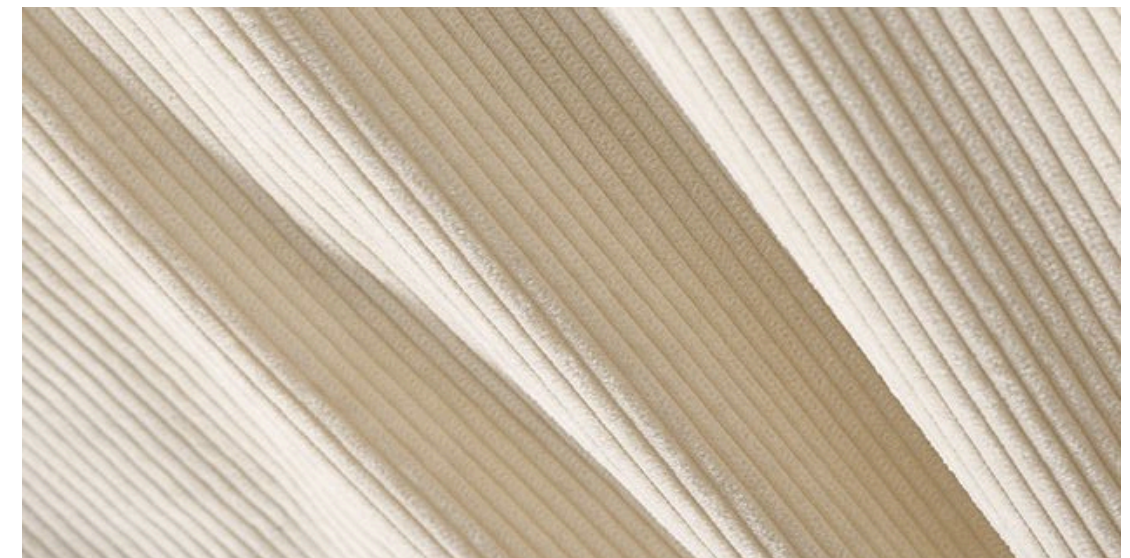
Denims

Firm, left-handed, 2/1 3/1 twill weave with coloured warp, usually dyed in indigo. uses thick yarn for weaving Slub yarns are often warp dyed, but they can also be inserted for a variety of effects. It is tear- and snag-resistant. Uses: casual apparel including skirts, jeans, light coats, and suits. kids' clothing, shorts. for clothes that provide protection. It is used in clothing as evening dress, children's clothing, work clothes, dungarees, sportswear, caps, jeans, skirts, shorts and lightweight coats and suits.



Corduroy Fabrics

A soft-feeling, highly lustrous ribbed pile fabric. fabricated with additional filler threads that lie above the ground threads. The threads are cut and brushed after weaving these loops, creating a pile. It swiftly takes in and releases moisture. Uses: Applied to enhance upholstery, draperies, and fabrics. It is frequently used to make shirts, sports coats and trousers or trousers. Additionally, corduroy is used to make dresses, skirts, suits, pants, and clothing for kids.



Chiffon

It's a polyester fabric with a crunchy, soft touch. Weaving uses yarns with a high twist. It's delicate by nature. made with gummed condition and highly twisted yarn. Uses: - Nightgowns, linings, special occasion outfits, Additionally worn as scarves, blouses, and evening attire.



Cambrics Fabrics

It is a fabric with a unique finish created from premium cotton yarn. This gives the fabric a luminous aspect. This is a lightweight, greige-colored plain weave cloth that originated in Cambrai. It has since been bleached, piece-dyed, and frequently glazed or calendared. Uses: Shirtings, linens, handkerchiefs, home furnishings industries, and fabric for lace and needlework



Cotton Twills

A twill weave creates a pattern of unique diagonal lines as each weft or filler yarn floats over the warp threads in a series of interlacings to the right or left. Our selection of cotton and cotton mix twills comes in plain, patterned, and yarn-dyed options.



Cotton Jacquards & Dobby

Dobby and Jacquard weaves, which are created on specialised looms, are distinguished by intricate woven-in patterns, frequently featuring substantial design repetitions or tapestry effects. This technique is used to create fabrics like brocade, damask, and brocatelle. Applications: Creating leisure clothing for men, women, and children.



Chambray Fabric

White threads make up the weft and coloured yarns line the warp of this lightweight plain woven fabric. It was once applied to linen cloth, but it is now made of cotton. Applications:- For many years, chambray has been a staple in fashion, mostly as a shirt fabric for button-down shirts with long sleeves and collars, like oxfords. Additionally, it's utilised for breezy summer clothing including dresses, shorts, skirts, shirts and even trainers. Stretch textiles for lightweight trousers in a variety of styles may be created by weaving spandex and lycra into chambray.



Rayon Challis

The 54" wide Rayon Challis fabric is made entirely of rayon. Luxurious rayon fibres with a simple weave are used in its manufacturing. The weaving of this rayon challis is tight. With a weight of 115 gsm (grammes per square metre), this medium- to light-weight rayon has an exquisite drape. Uses: Because of its great comfort level, it is frequently worn by women and kids.



Rayon Twills

A characteristic of rayon twill fabric is its unique diagonal pattern. Compared to other Rayon fabrics, Rayon Twill Fabric is more structured and heavier. Its exceptional endurance is a result of these characteristics, which define twill fabric. The Rayon Twill Fabric's softness and absorbency are further advantages. Applications: This robust, opaque beauty works best when fashioned into exquisite dresses, pants, blazers, and other business wear.



Rayon Crepe

Elegant grooves give Rayon Crepe Fabric a crisp, crinkled shape. Purified cellulose fibre, or wood pulp, is used to create this pancake fabric. Applications: Rayon Crepe Fabric has a stunning drape and is very durable. It is perfect for evening wear, tunics and summer dresses.



Rayon Dobbys & Jacquards

Rayon Dobby & Jacquard drapes well, is stylish, and has a very soft hand finish. Applications:— This fabric is perfect for crafts, home and event décor projects, evening attire, shirts, dance wear, dresses, trousers and skirts. A fabric that women just must have.



Poly /Nylon Jacquard Quilts

Nylon & Poly Jacquards Sewing two or more layers of cloth together to produce a thicker padded material is called quilting, and the finished product is typically a quilt or quilted garment. We provide a wide variety of quilt fabrics using nylon or polyester fake stuffing. Applications. :-to create winter upperwear for women, men, and children.



Micro Fibre - Poly Twills

Fabric is made from microfiber, a polyester and nylon (polyamide) fibre blend. Because microfiber wicks moisture (perspiration) away from the body to keep the user cool and dry, it is frequently used for sports clothing, such as cycling jerseys. Because microfiber is extremely elastic, it may be used for underwear.



Poly & Nylon Taffeta

Nylon fibres that are tightly woven and have a crinkled texture and a sophisticated shine are used to create taffeta textiles. These materials often have a sharp touch and are light to medium weight. Both stretch taffeta (58/60") and extra-wide nylon taffeta (110") are offered in our taffeta assortment. Uses: Taffeta is used for many things, including draperies, tablecloths, clothing and accessories, and event décor.

